



## DUO

### Corten bench

Duo bench combines the use of a bench with the one of a rack. Ideal for an urban stop or to be placed in garden. The decoration is designed to let the light go through from the above, and from the ground to allow the green to grow.

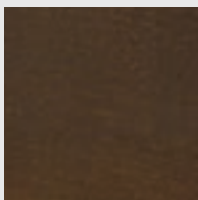
#### DETAILS

<b>Brand</b>	TrackDesign
<b>Typology</b>	Bench
<b>Collection</b>	Duo
<b>Designer</b>	Alessandra Savio
<b>Dimensions</b>	L 1795 mm; P 550 mm H 460 mm
<b>Materials</b>	Corten steel, okoume wood
<b>Weight</b>	

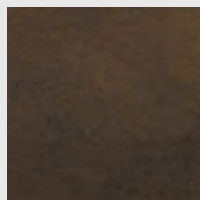
## PRODUCT CONFIGURATION

### AVAILABLE MATERIALS

Available in:



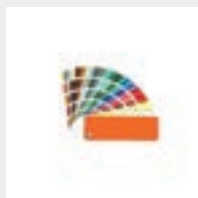
Controlled oxidation  
corten  
for outdoor use



Waxed corten  
for interior use

### AVAILABLE COLORS AND FINISHES

Painted steel available in the colors:



RAL  
to be agreed upon

