

BEE

Decorative panel in corten

DESCRIPTION

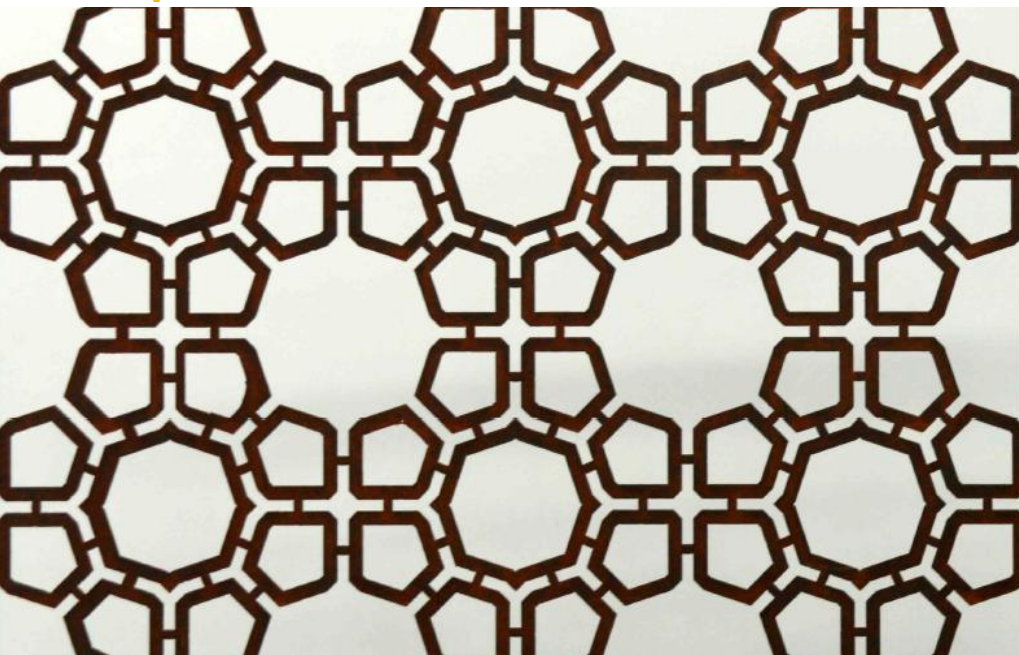
Bee pattern is reproduced on the corten surface draws various and complex geometries. The steel sheet is worked with water jet cutting technology. Those form and decoration are suitable and shall be adapted to the interior design or to your outdoor decor. The decorative panel in corten steel is recommended and fits perfectly for indoor and outdoor spaces.

On the photo, the partition is combined with Line, corten planter, in order to transform in original design your garden spaces.

DETAILS

Designer	Alessandra Savio
Brand	TrackDesign
Typology	Decorative Panel
Collection	BEE
Size*	Length 90cm - Height 140cm ; thickness 1.5mm
Material	Corten steel - Natural finish

* On customer's request the size of the decorative pannel, Bee, are customizable.



BEE

Decorative panel in corten

DETAILS

Designer	Alessandra Savio
Brand	TrackDesign
Typology	Decorative Panel
Collection	BEE
Size*	Length 90cm - Height 140cm ; thickness 1.5mm
Material	Corten steel - Natural finish

* On customer's request the size of the decorative pannel, Bee, are customizable.